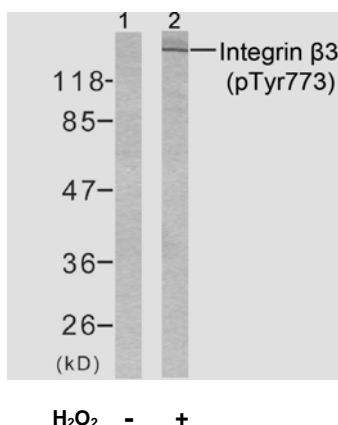


## Rabbit anti Integrin $\beta 3$ (pTyr773)

- Catalog Number:** pAP11060  
**Amount:** 100 $\mu$ l (for 10 Western Blotting)  
**Form of Antibody:** Rabbit IgG in phosphate buffered saline (without  $Mg^{2+}$  and  $Ca^{2+}$ ), pH 7.4, 150mM NaCl, 0.02% sodium azide and 50% glycerol.  
**Storage/Stability:** Store at -20°C/1 year  
**Immunogen:** The antiserum was produced against synthesized phosphopeptide derived from human Integrin  $\beta 3$  around the phosphorylation site of tyrosine 773 (P-L-Y<sup>P</sup>-K-E).  
**Purification:** The antibody was affinity-purified from rabbit antiserum by affinity-chromatography using epitope-specific phosphopeptide. The antibody against non-phosphopeptide was removed by chromatography using non-phosphopeptide corresponding to the phosphorylation site.  
**Specificity/Sensitivity:** Integrin  $\beta 3$  (phospho-Tyr773) antibody detects endogenous levels of Integrin  $\beta 3$  only when phosphorylated at tyrosine 773.  
**Reactivity:** Human, Mouse  
**Applications:** 1:1000  
**Swiss-Prot No. :** P05106  
**References:** Chandhoke SK, et al. (2004) J Cell Sci.117 (Pt 8): 1431-1441.  
Datta A, et al. (2002) J Biol Chem.277 (6): 3943-3949.  
Law DA, et al. (1996) J Biol Chem.271 (18): 10811-10815.



Western blot analysis of extracts from HL-60 cells using Integrin  $\beta 3$  (phospho-Tyr773) antibody.

**For Research Use Only**

Contact & Ordering Information: Angio-Proteomie, 11 Park Drive, Suite 12, Boston, MA 02215, USA. Fax: (480) 247-4337, [angioproteomie@gmail.com](mailto:angioproteomie@gmail.com)